



<http://www.globalmapper.com/>



 **Open Your Own Data Files**
(Menu Command: File->Open Data File)

 **Find Data Online**
(Menu Command: File->Find Data Online)

**Download Free Maps/Imagery
from Online Sources**
(Menu Command: File->Download Online Imagery/Topo Maps)

 **Display Settings/Projection**
(Menu Command: Tools->Configuration)

 **Manage Loaded Data**
(Menu Command: Tools->Control Center)

Search

Fly To Find Businesses Directions

Fly to e.g., Hotels near JFK

Places

Add Content

- My Places
 - Untitled Placemark
 - Berlin3D
- bunker.kmz
 - bunker

Layers

- Primary Database
- Geographic Web
- Roads
- 3D Buildings
- Street View
- Borders and Labels



Data U.S. Navy
© 2009 Tele Atlas
© 2009 Europa Technologies
© 2009 DMapas



lat 50.999993° lon 9.000008° elev 400 m Eye alt 11001.40

- Open Data File(s)... Ctrl+O
- Open Generic ASCII Text File(s)...
- Open All Files in a Directory Tree...
- Open ECW File from the Web...
- Open Data File at Fixed Screen Location...
- Unload All... Ctrl+U

Atlas Shader [dropdown] 3D [checkbox] [icons]



our Own Data Files

Overlay Control Center

Currently Opened Overlays (Right Click on Overlay Names for More Options)

<input checked="" type="checkbox"/>	<HY01CATD.DDF> <01> - BLUE SPRINGS, MO - HYDROGRAPHY	↑
<input checked="" type="checkbox"/>	<HP01CATD.DDF> <01> - BLUE SPRINGS, MO - HYPISOGRAPHY	↑
<input checked="" type="checkbox"/>	<MS01CATD.DDF> <01> - BLUE SPRINGS, MO - MANMADE FEAT	↑
<input checked="" type="checkbox"/>	<NV01CATD.DDF> <01> - BLUE SPRINGS, MO - NON-VEG FEATL	↑
<input checked="" type="checkbox"/>	<SC01CATD.DDF> <01> - BLUE SPRINGS, MO - VEG SURFACE C	↓
<input checked="" type="checkbox"/>	<SM01CATD.DDF> <01> - BLUE SPRINGS, MO - SURVEY CONTE	↓

Metadata... Options... Show Overlay Close Overlay

Close

e Loaded Data
mand: Tools->Control Center)

- Create New Map Catalog...
- Find Data Online...
- Download Online Imagery/Topo...
- Load Workspace...
- Save Workspace...
- Save Workspace As...
- Run Script...
- Capture Screen Contents to I...
- Export Global Mapper Package...
- Export Raster and Elevation D...
- Export Vector Data
- Export Web Formats (Google...
- Batch Convert/Reproject...
- Combine Terrain Layers...
- Generate Contours...
- Rectify (Georeference) Imagery...
- Print... Ctrl+P
- Print Preview...
- Print Setup...

- 1 blue_springs_mo_24k_dem
- 2 DNC_San_Diego_Bay_h1316010



 **Open Your Own Data Files**
(Menu Command: File->Open Data File)

 **Find Data Online**
(Menu Command: File->Find Data Online)

**Download Free Maps/Imagery
from Online Sources**
(Menu Command: File->Download Online Imagery/Topo Maps)

 **Display Settings/Projection**
(Menu Command: Tools->Configuration)

 **Manage Loaded Data**
(Menu Command: Tools->Control Center)

Select Online Data Source to Download



Select Data Source

- *** Worldwide High-Res Imagery *** from DigitalGlobe [PREMIUM CONTENT]
- DOQ - USGS Digital Ortho-Quadangle (Grayscale aerial imagery) [TERRASERVER-USA.COM]
- DRG - USGS Digital Raster Graphics (Topographic Maps) [TERRASERVER-USA.COM]
- UrbanArea - High-resolution Color Imagery for Select Urban Areas in the US [TERRASERVER-USA.COM]
- Intermap TerrainOnDemand (Highly Accurate 3D DEMs) [PREMIUM CONTENT]
- Landsat7 Global Imagery Mosaic (Natural Color, Pan-Sharpended) [REGISTERED USERS ONLY]
- Landsat7 Global Imagery Mosaic (Psuedo-Color, Pan-Sharpended) [REGISTERED USERS ONLY]
- United States Elevation Data (NED) (30m Resolution) [Use <http://seamless.usgs.gov/> if fails] [REGISTERED USERS ONLY]
- SRTM Worldwide Elevation Data (3-arc-second Resolution) [Use <http://srtm.csi.cgiar.org/> if fails] [REGISTERED USERS ONLY]
- NEXRAD Radar Base Composite (US) [REGISTERED USERS ONLY]
- Light Detection and Ranging (LiDAR) Data [REGISTERED USERS ONLY]

OK

Cancel

Add WMS Data Source...

Remove Source

Delete Cached Files...

Select Area to Download

Current Screen Bounds

Within miles of address

Within miles of latitude longitude

Specify Latitude/Longitude Bounds of Area

West North
South East

(NOTE: Longitude values in the Western Hemisphere and latitude values in the Southern hemisphere must be negative.)

Entire Data Source Bounds

IMPORTANT NOTE: These data sources are on external servers that Global Mapper has no control over. The data may draw/export very slowly or become unavailable at any time. We have no control over this.

Datenquellen in Demo-Version

Select Online Data Source to Download

Select Data Source

- **USGS Digital Ortho-Quadangle (Grayscale aerial imagery)**
- **USGS Digital Raster Graphics (Topographic Maps)**
- **UrbanArea – High-resolution Color Imagery for Select Urban Areas in the US**

OK
Cancel

Select Area to Download

Current Screen Bounds

Within miles of address

Within miles of latitude longitude

Specify Latitude/Longitude Bounds of Area

West North East South

Entire Data Source Bounds

(NOTE: Longitude values in the Western Hemisphere and latitude values in the Southern hemisphere must be negative.)

IMPORTANT NOTE: These data sources are on external servers that Global Mapper has no control over. The data may draw/export very slowly or become unavailable at any time. We have no control over this.

terraserver-usa.com

Datenquellen in Vollversion (\$299)

Select Online Data Source to Download



Select Data Source

- DigitalGlobe
- Landsat7
- USGS-DEM (30 m)
- SRTM Worldwide Elevation Data (3")

OK
Cancel

Add WMS Data Source...

Remove Source

Delete Cached Files...

Select Area to Download

- div. Luftfahrtkarten für USA
- beliebige andere WMS-Dienste

(NOTE: Longitude values in the Western Hemisphere and latitude values in the Southern hemisphere must be negative.)

IMPORTANT NOTE: These data sources are on external servers that Global Mapper has no control over. The data may draw/export very slowly or become unavailable at any time. We have no control over this.

Add WMS Data Source...

Remove Source

Select Area to Download

Current Screen Bounds

Within miles of address

Within miles of latitude

Specify Latitude/Longitude Bounds of Area

West

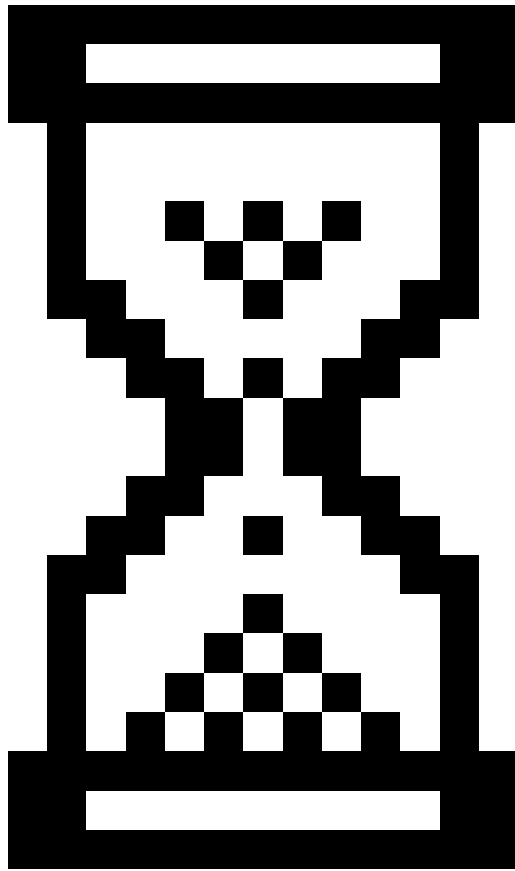
North

East

South

Entire Data Source Bounds

IMPORTANT NOTE: These data sources are on external servers that Glueviz become unavailable at any time. We have no control over this.



Add WMS Data Source...

Remove Source

Select Area to Download

Current Screen Bounds

Within miles of address

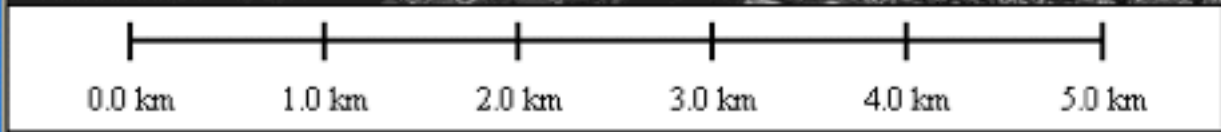
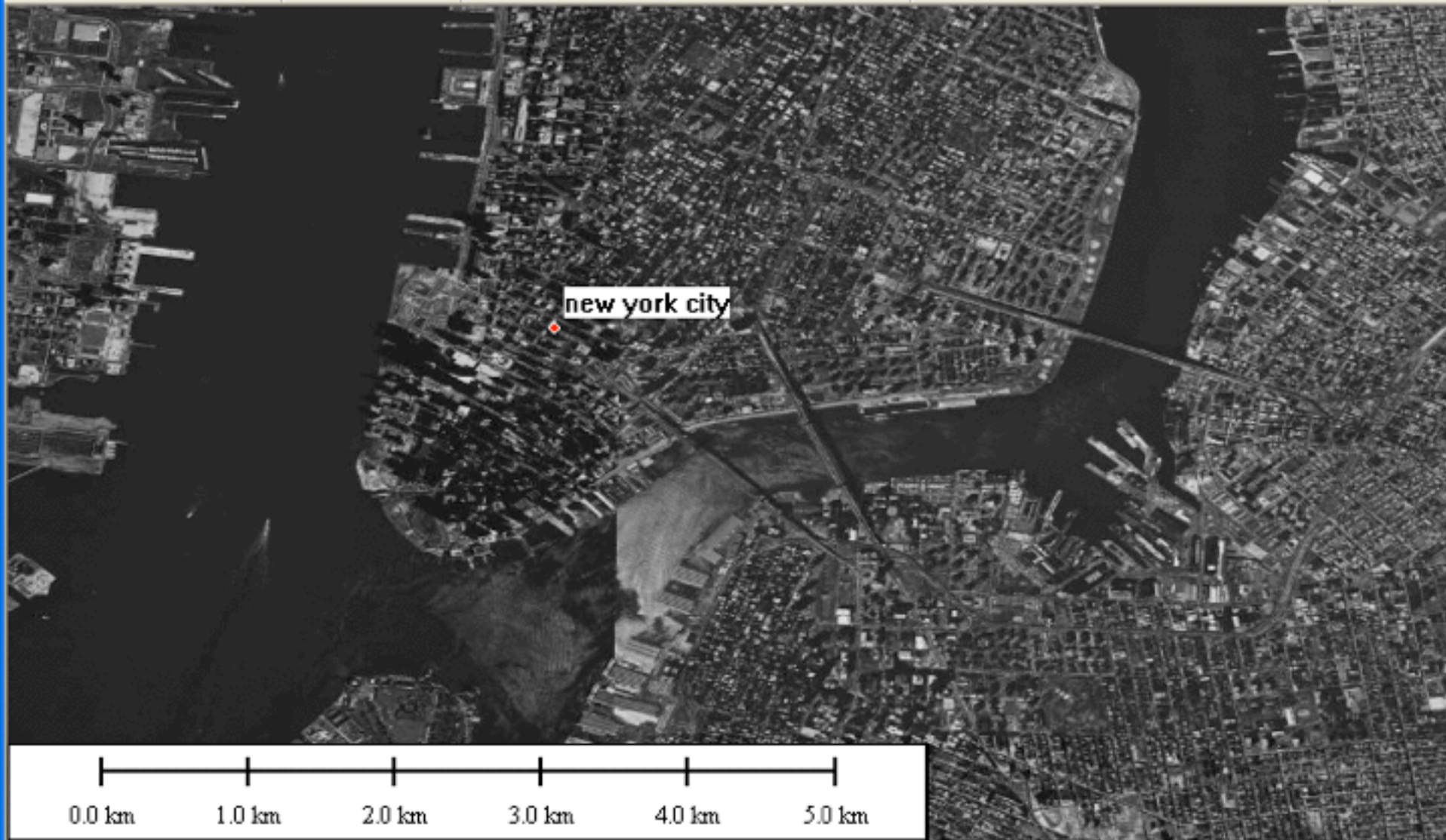
Within miles of latitude

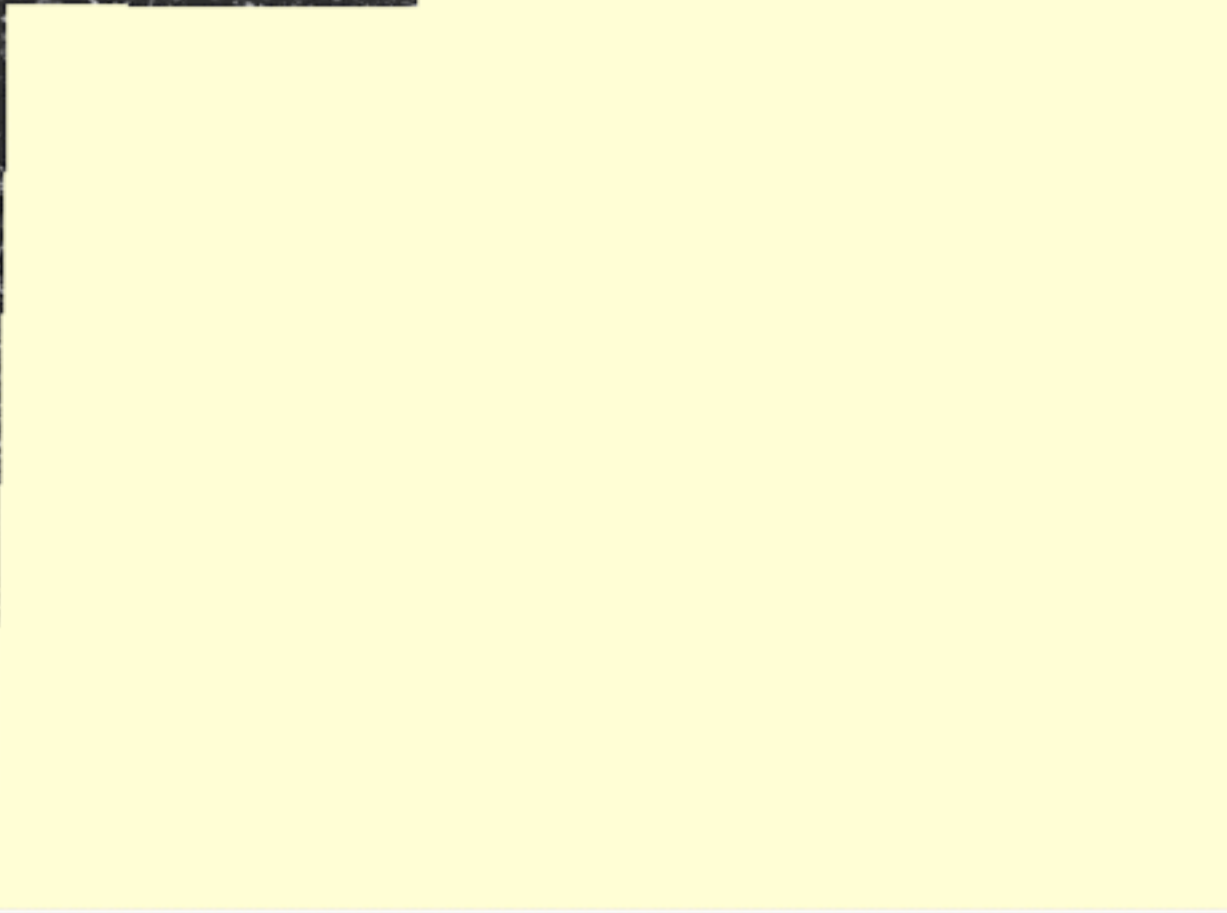
Specify Latitude/Longitude Bounds of Area

West North East
South

Entire Data Source Bounds

IMPORTANT NOTE: These data sources are on external servers that Gl... become unavailable at any time. We have no control over this.







Open Your Own Data Files

(Menu Command: File->Open Data File)



Find Data Online

(Menu Command: File->Find Data Online)

**Download Free Maps/Imagery
from Online Sources**

(Menu Command: File->Download Online Imagery/Topo Maps)



Display Settings/Projection

(Menu Command: Tools->Configuration)

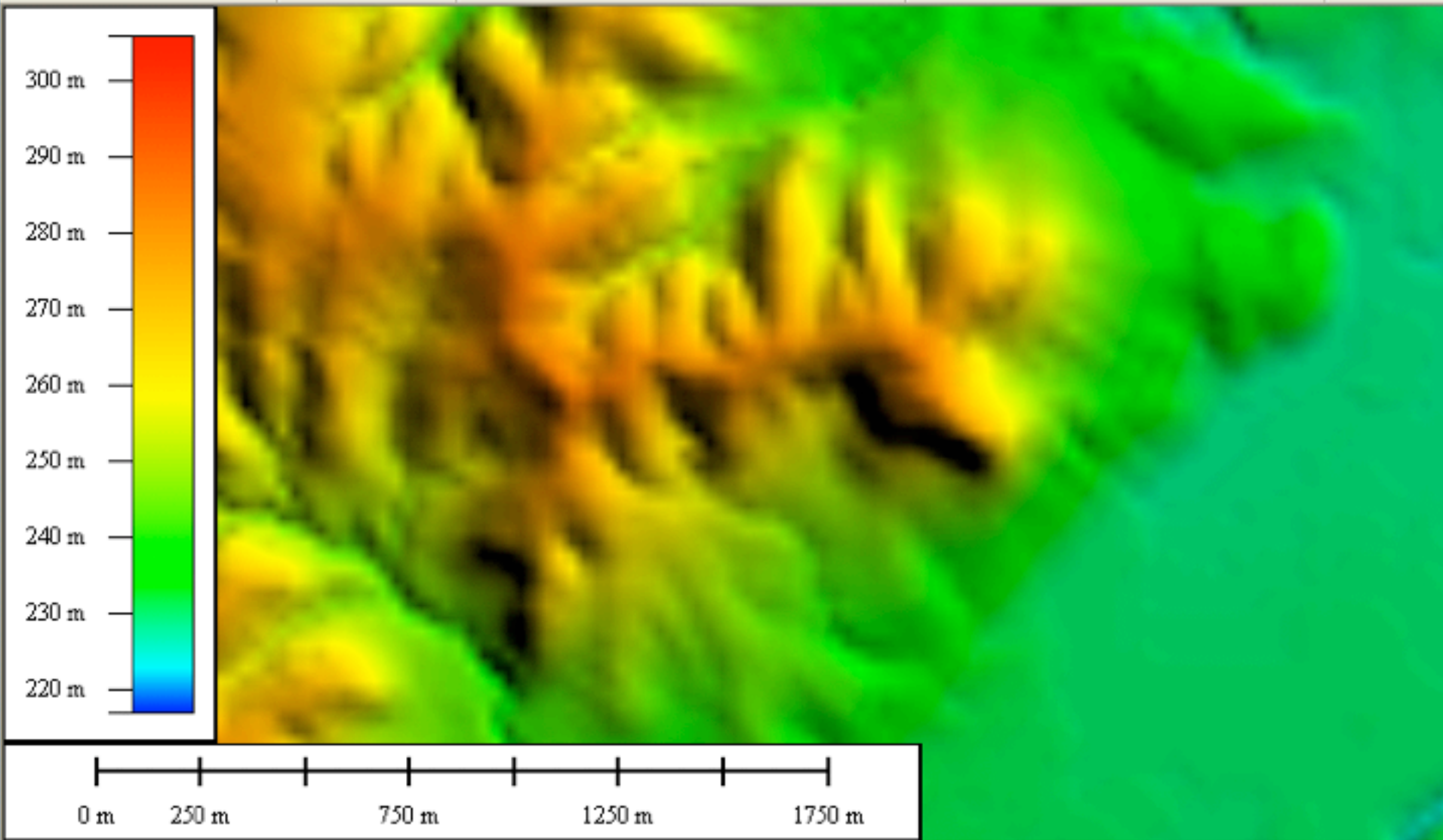


Manage Loaded Data

(Menu Command: Tools->Control Center)

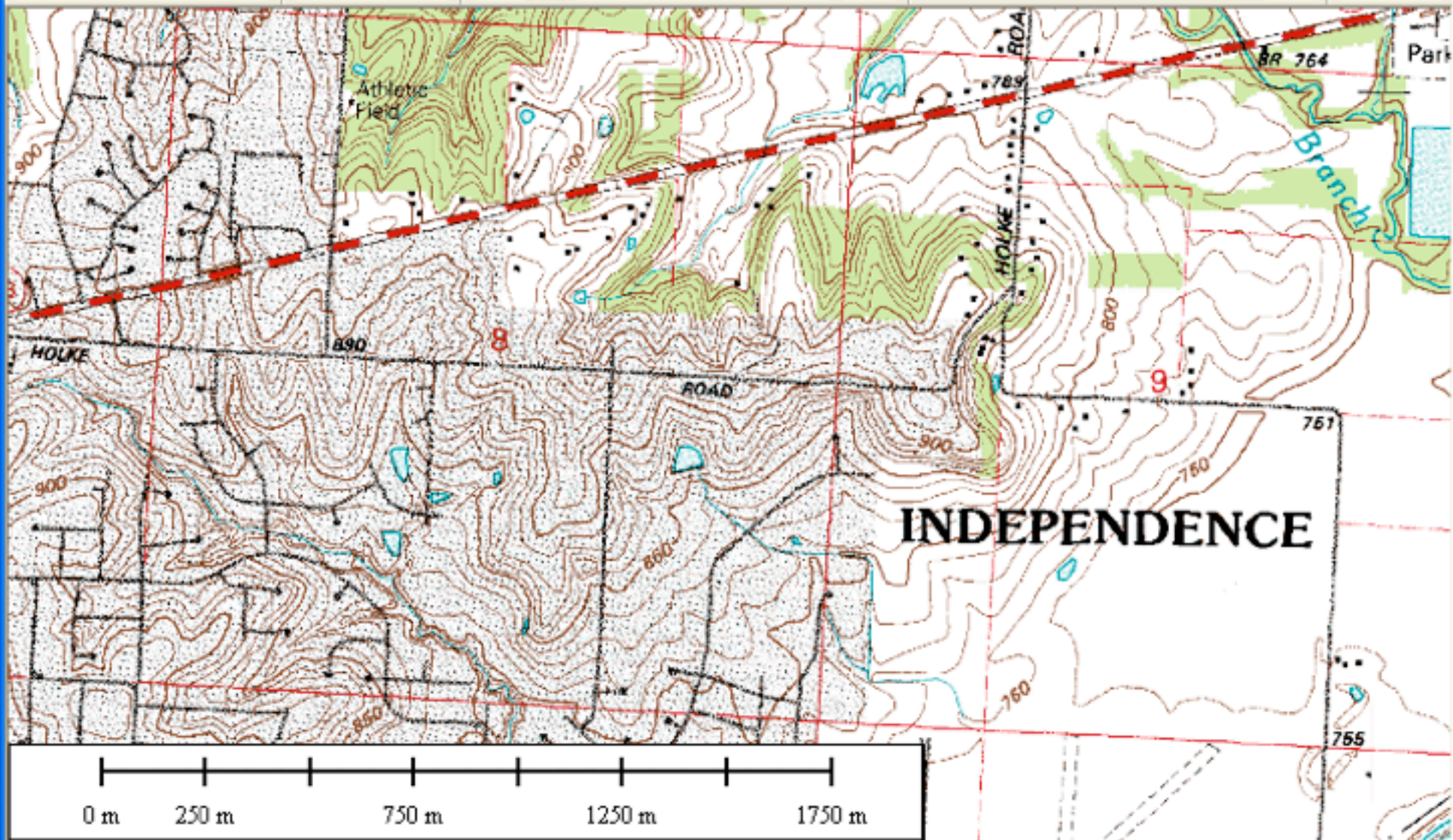
Unterstützte Formate

USGS Digital Line Graph, Optional Format (DLG-O), USGS Digital Line Graph, Spatial Data Transfer Standard Format (DLG/SDTS), USGS Digital Elevation Model (DEM), USGS Digital Elevation Model, Spatial Data Transfer Standard Format (DEM/SDTS), USGS Digital Elevation Model, GeoTIFF Format, USGS Digital Raster Graphic (DRG), USGS Digital Orthophoto Quads (DOQ), Native USGS Format, USGS Digital Orthophoto Quads (DOQ), GeoTIFF Format, USGS Digital Orthophoto Quads (DOQ), JPG w/ Native Header Format, USGS Geographic Names Information System (GNIS), USGS Land Use and Land Cover Data (LULC), USGS National Elevation Dataset (NED) - ArcGrid, BIL, Grid Float Format, Global 30-arc-second Digital Elevation Data (GTOPO30), NOAA DSDATA Geodetic Control, SDTS Format, NOAA TerrainBase Elevation Data, Canadian Digital Elevation Data (CDED), JPEG Image with World File, JPEG Image with Embedded EXIF Position Information, PNG Image with World File, AutoCAD DXF (Drawing Interchange File), ESRI Shapefiles, Surfer Grid (ASCII and Binary) Format Files, Canada 3D Files, International Bathymetric Chart of the Arctic Ocean (IBCAO) Files, Global 2' Elevation Data (ETOPO2), GLOBE (Global Land 1-km Base Elevation) Data, Arc/Info ASCII Grid, Arc/Info Binary Grid, LizardTech MrSID Data, Arc/Info Export Format (E00), ERMapper Compressed Wavelet (ECW) Format, ERDAS Imagine Image Format, DTED (Digital Terrain Elevation Data) Format, MapInfo MIF/MID and TAB/MAP Formats, NIMA GNS (GeoNet Names Server) Format, Terragen Terrain Format, MicroStation DGN Format, SRTM (Shuttle Radar Topography Mission), BIL/BSQ/BIP/RAW Imagery, ASTER DEM and L1A/L1B Imagery and MODIS imagery, BSB Nautical Charts, MapTech Topo Maps and Aerial Navigation Charts, MapTech Nautical Charts (PCX Format), TIGER/Line Files, ADRG Files, ASRP (Arc Standard Raster Product) and USRP Files, CADRG and CIB Files, VPF (VMAP0, VMAP1, DNC) Files, S-57 Digital Chart Files, JPEG2000 Files, Erdas GIS/LAN Files, GIF Files, NOS/GEO Chart Files, Garmin PCX5 Format Waypoint (WPT), Route (RTE), and Track (TRK) Files, OziExplorer Waypoint (WPT), Route (RTE), and Track (PLT) Files, GPX (GPS eXchange Format) Files, Zmap Plus Grid Files, DBF (DBase III+) Files, BT (Binary Terrain) Elevation Grid Files, GXF (Geosoft ASCII Grid) Files, Geosoft Binary Grid Files, ASPRS LIDAR LAS Files, Hypack Matrix Files, Marplot MIE Files, DHM - Swiss DEM Files, Lowrance USR, GPS TrackMaker, Landsat 7A FAST Format, NTF Grid/Contour Format, TerraScan .bin/.ts Format, Idrisi Format, Japanese DEM (JDEM) Format, SEGP1/UKOOA Seismic Shotpoint Format, CompeGPS RTE, TRK, and WPT Formats, KML/KMZ Formats, Lowrance SonarViewer Format, NITF - National Imagery Transmission Format, Geodas Grid (GRD98) Format, Intergraph COT Format, CDF (GES Cartographic Data Format), Platte River ASCII Digitizer Format, AutoCAD DWG (DraWinG) File, WAsP .MAP Format, PGM Grayscale Grid Format, SMT KINGDOM Software Planimetric Polygon Format, Polish MP (cGPSMapper) Format, GML (Geography Markup Language) Format, DMDF (Digital Map Data Format) Format, EMF (Windows Enhanced Metafile) Format, PCX Files, RIK (Swedish Topo Map) Files, MPR/MPH (German Topo Map) Files, OCAD .OCD Files, HF2/HFZ Files, PLS-CADD XYZ Files, OpenStreetMap (OSM) Files, TomTom OV2 Files, Vulcan3D Triangulation (.00t) Files, Delft3D (LDB) Files, ESRI Personal Geodatabase Format (MDB) Files, BigTIFF, DeLorme Text Files, MagicMaps IKT Files, Gravsoft Grid Files, PDS (Vicar) Files, Surfer BLN Files, STL Files, SOSI Files



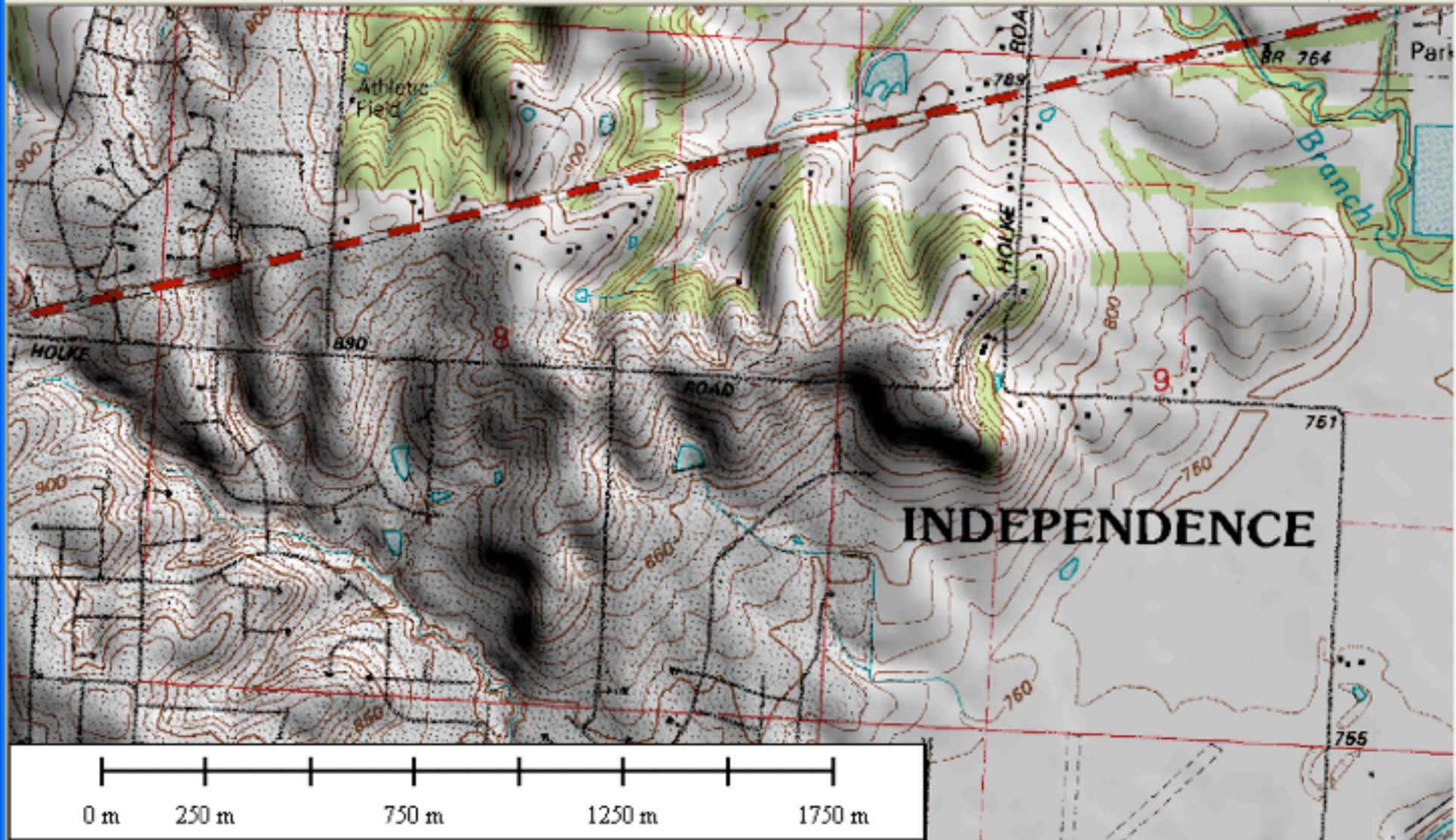
Height = 906.408 feet (BLUE SPRINGS, MO (blue_springs_mo_24k_dem.zip))

1:17610 UTM (NAD27) - (382779.851, 4325784.



Right click to change the scale units or to hide it.

1:17610 UTM (NAD27) - (383343.758, 4325052.



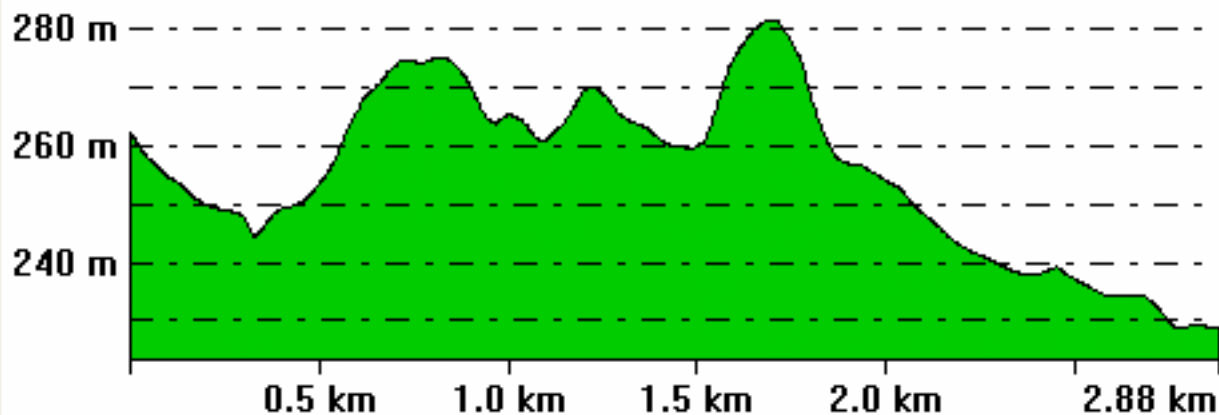
Right click to change the scale units or to hide it.

1:17610 UTM (NAD27) - (383185.305, 4324954.

Path Profile/Line of Sight

File Options Calculate

From Pos: 382006.228, 4325378.756 To Pos: 384690.609, 4326427.342



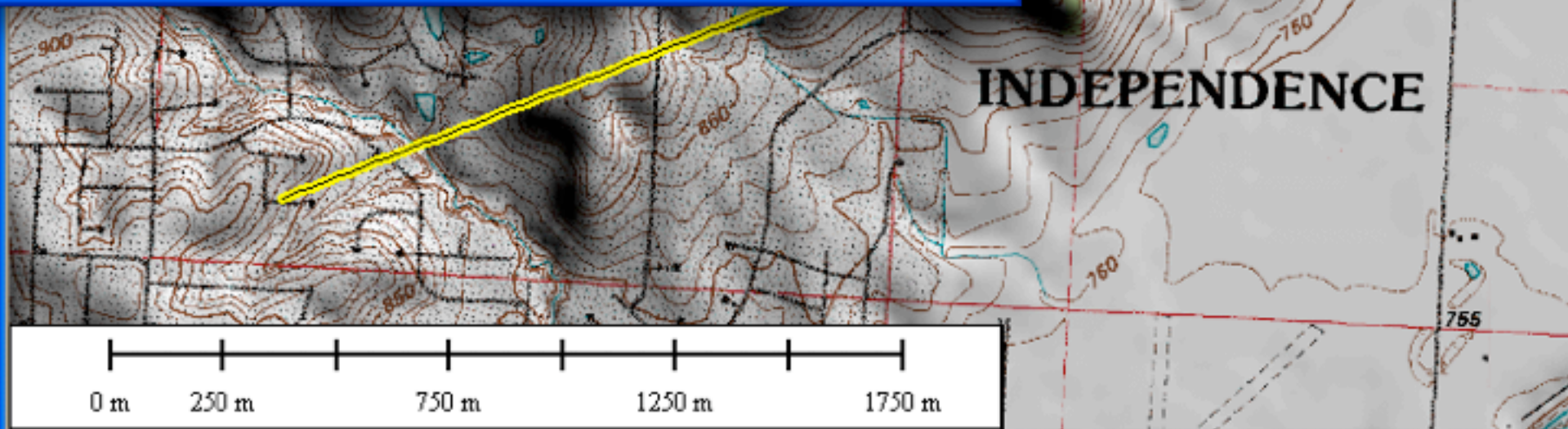
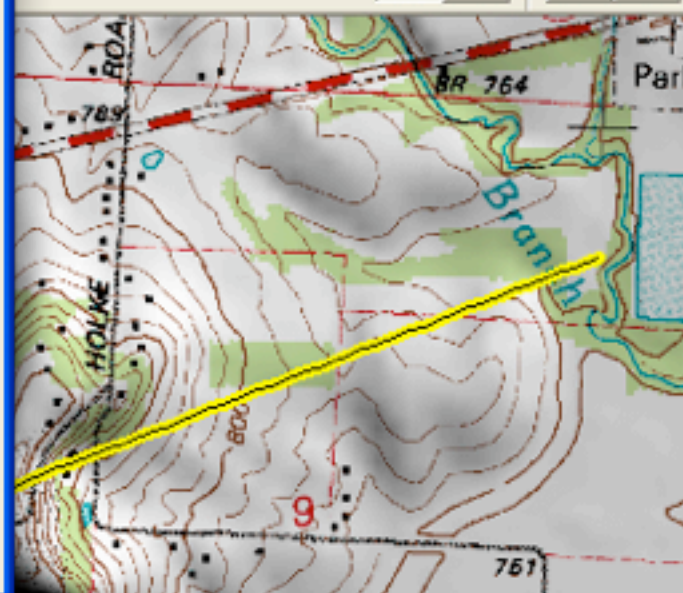
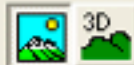
Line of Sight...

Cut-and-Fill Volumes...

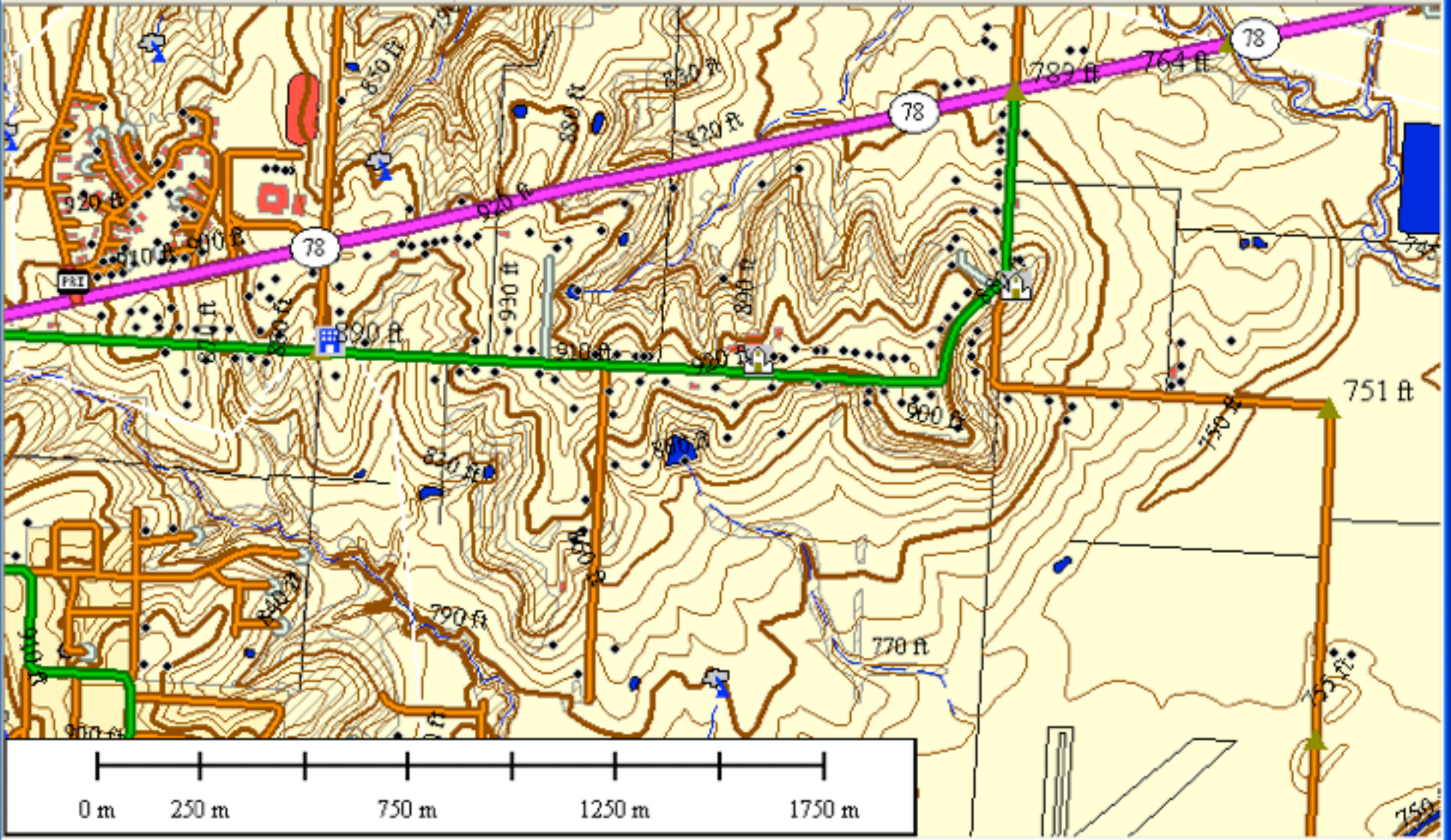
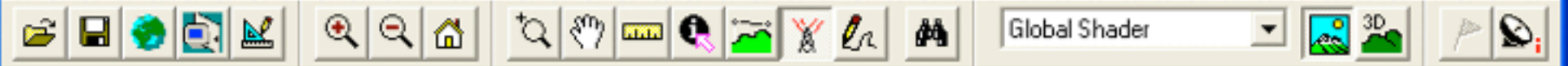
Help

OK

Atlas Shader



Left click to start adding points. --> Height = 758.204 feet, Height = 758.204 feet (<O39094A3_blu 1:17610 UTM (NAD27) - (384835.081, 4324866.



Right click to change the scale units or to hide it.

1:17610 UTM (NAD27) - (382938.304, 4325043.



Find By Name

Search String: Close

Types To Search

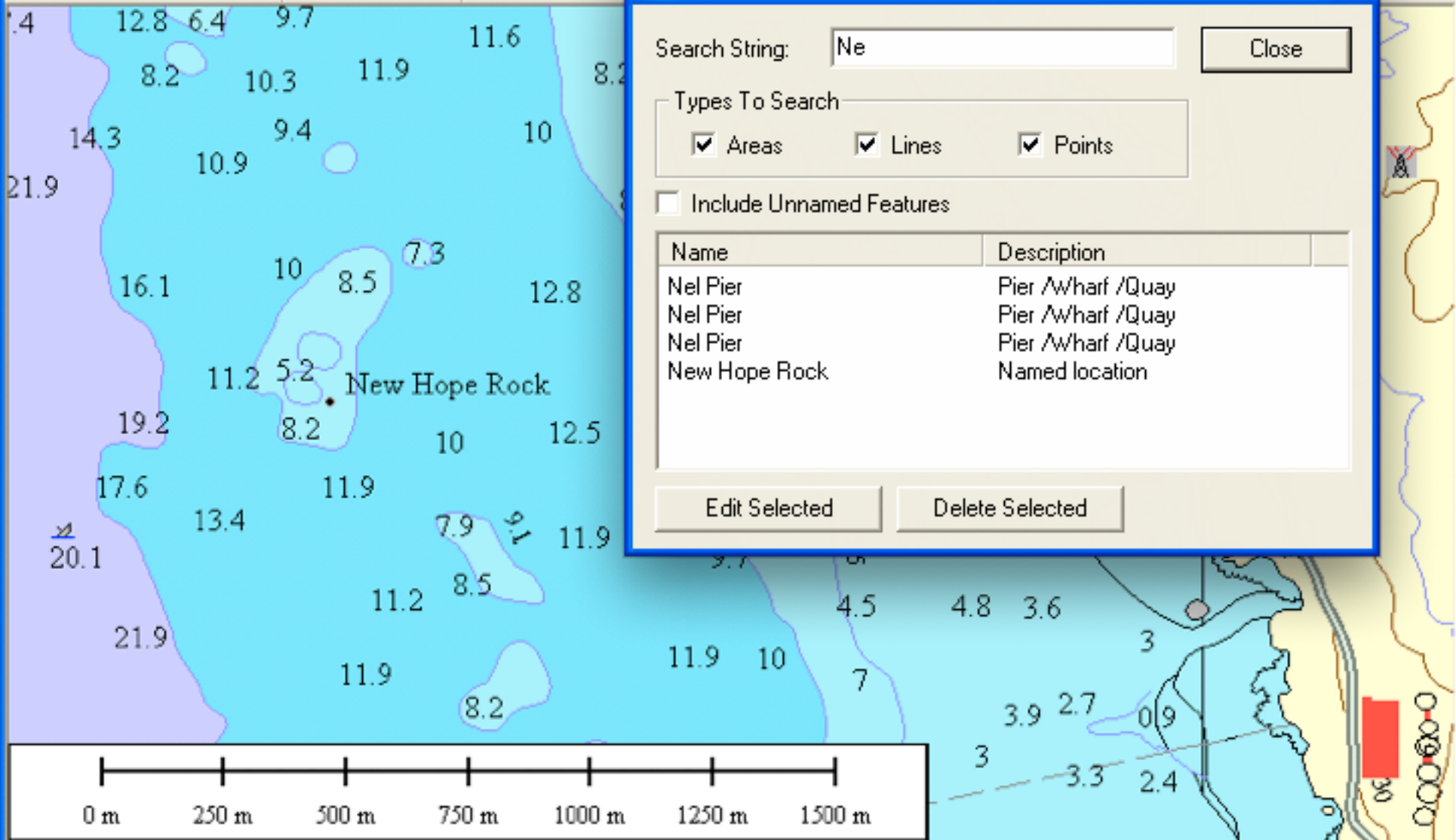
- Areas
 Lines
 Points

Include Unnamed Features

Name	Description
Nel Pier	Pier /Wharf /Quay
Nel Pier	Pier /Wharf /Quay
Nel Pier	Pier /Wharf /Quay
New Hope Rock	Named location

Edit Selected

Delete Selected



	Global Mapper	Google Earth
Art der verfügbaren Kartendaten	wenige vordefinierte WMS-Server (TerraServer, ...)	Googles Satelliten- und Luftbild-Mesh
Import/Export-Schnittstellen	sehr umfangreich, auch KML und WMS	nur KML und WMS
aktueller Standort	GPS über RS232	keine GPS-Anbindung (vorhanden in Google Earth Pro)
Themenwahl	keine Themen eingebaut, aber beliebige Themen importierbar	viele Themen wie Infrastruktur und Lexika schon mitgeliefert
Geocoding	eingebaut (schwache bis mäßige Leistung)	eingebaut (hohe Leistung)
User Interface, Usability	mäßig bis schlecht (unintuitiv, umständlich)	gut (eingängig und übersichtlich)
Navigation	indirekt über diverse Werkzeuge, langsames Neuzeichnen	unmittelbar im Anzeigebereich, extrem schnelles Aktualisieren
Messwerkzeuge	diverse (Strecken, Flächen, Profile, Sichtlinienanalysen)	nur Strecken
Umfang/Qualität der Basiskarten	keine Basiskarten per se	umfangreiches Satelliten- und Luftbild-Material
Popularität	100 000 Suchmaschinen-Nennungen	25 000 000–50 000 000 Suchmaschinen-Nennungen

Holger Schropp

Arne Johannessen

<http://www.home.hs-karlsruhe.de/~joar0011/>